

## switch-disconnector 3-pole (33553)



The picture may show a similar product.

### Description

Part No.: **33553 000**

QUADRON® 60Classic Speed

switch-disconnector 3-pole

screw M10, connection bottom, for door coupling rotary handle

320 A

double-breaking

operator independent switching (snap-action mechanism)

for busbars 12, 15, 20, 25, 30 x 5, 10 and section busbars

### System

60Classic

## Advantages of the product

With spring-controlled switch mechanism for frequent switching as per utilisation category "A"

Lockable in neutral position with up to 3 padlocks

FLAG indicator shows the switch setting

double-breaking main contacts

Can be used as a mains disconnecter as per IEC / EN 60204-1 (main switch)

Can also be used as an Emergency Off switch in combination with the red/yellow door coupling twist handle

Main switch only in combination with utilisation category AC-23A/B

AC-23B (400V/280A), AC-23B (690V/250A)

CrossLink® adapter technology

Simple and safe clicking into place and making contact

Busbar supports can be mounted above each other for flat busbars

Switches can be installed 90° left/right horizontal, always with the same switch handle position

**Product group** 14

**Subgroup** 23

**pack size** 1

**EAN** 4021267335533

**ETIM 5.0** EC000216

**ETIM 8.0** EC000216

**ETIM 10.0** EC000216

## Approvals

### Standards

IEC 60947-1:2020

IEC 60947-3:2020 AC ratings only

type number: QCS-320

# Technical data

## Details IEC

### Standards

IEC 60947-1:2020

IEC 60947-3:2020 AC ratings only

### Electrical data IEC

rated current (IEC): 320 A

rated voltage (IEC) AC: 690 V

rated isolation voltage  $U_i$  AC: 800 V

rated surge voltage  $U_{imp}$ : 8 kV

Utilisation category AC (IEC 60947-3): AC-23B (690V/250A)  
AC-23A (500V/250A)  
AC-23B (400V/280A)  
AC-22A (690V/250A)  
AC-22B (690V/300A)  
AC-22B (500V/320A)

approved with fuse links of operation class: gG

rated short-circuit making capacity 12kA (690V AC) cond. rated short-circuit current 50kA (fuses gL/  
gG size 1 250A-690V AC)

Special operating conditions corresponding to IEC / EN 61439-1 may yield to faulty activations of pilot switches and fuse monitors. The operating conditions have to be considered for the analysis of status signals.

When several devices are used side-by-side in continuous operation, the rated load factor specified in VDE 0660 Part 500 / EN 60 439-1, Table 1, must be observed.

System component: degree of protection IP20 at front as per DIN EN 60529, degree of protection near terminal depends on installation; shock protection as per DIN EN 50274

adapter module: front side degree of protection IP20 as per DIN EN 60529 (finger-safe)

## Mechanical data

W x H x D: 184 x 286 x 192

weight: 543.0 kg/100

poles: 3-pole

for busbars: 12, 15, 20, 25, 30 x 5, 10 and section busbars

Busbar connector: externally tensioned contacting, convenient click mechanism, simple conversion of the combination bases from 5 to 10mm-thick busbars When installing QCS, a busbar support is to be applied left and right, see assembly manual.

### **Terminal points**

screw connection

M10

screw drive: SW16

Md min.: 30.0 Nm

Md max.: 35.0 Nm

### **Material properties**

halogen-free: No

# Accessories

## connection accessories



### **33145 000**

prism terminal, double, for Cu cables

2x 35 - 70 mm<sup>2</sup>

for: QCB-NH1, QCS-NH1, QCS-320



### **33163 000**

clamp connector for Cu cables

70 - 150 mm<sup>2</sup>

for: QCB-NH2, LTS-F 400, LTS 630



### **33166 000**

prism terminal, single, for Cu cables

35 - 150 mm<sup>2</sup>

QCB-NH1, QCS-NH1, QCS-320

for: QCB-NH1, QCS-NH1, QCS-320



### **33909 000**

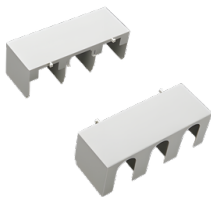
box terminal for Cu cables

35 - 150 mm<sup>2</sup>

QCB-NH1, QCS-NH1, QCS-320

for: QCB-NH1, QCS-NH1, QCS-320

## covers



### **33142 000**

cover for cable lugs, top / bottom attachable

for: QCB-NH1, QCS-NH1, QCS-320

further accessories



**33908 000**

pilot switch for monitoring the switch position  
changeover 250 V AC / 5 A, 30 V DC / 4 A  
for: QCS-NH00, QCS-NH1, QCS-160, QCS-320



**33910 000**

door coupling rotary drive  
black, with handle  
door interlock can be activated, for padlocks  
for: QCS-NH00, QCS-NH1, QCS-160, QCS-320



**33911 000**

door coupling rotary drive  
yellow-red, with handle  
door interlock can be activated, for padlocks  
for: QCS-NH00, QCS-NH1, QCS-160, QCS-320



**33912 000**

extension shaft, 290 mm long  
for: QCS-NH00, QCS-NH1, QCS-160, QCS-320, CP-PV



**33913 000**

extension shaft, 490 mm long  
for: QCS-NH00, QCS-NH1, QCS-160, QCS-320, CP-PV

<https://pim.woehner.de/EN/EN/1000049638>